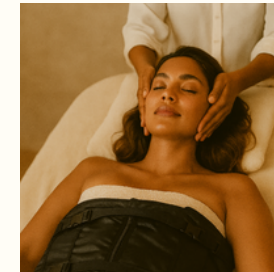




Lymphatic Drainage



Mechanical pressotherapy represents a sophisticated method of lymphatic drainage that employs air pressure compression. By encasing the body in a specialized suit equipped with air chambers, the device generates a rhythmic wave of pressure that enhances the natural circulation of the lymphatic system.

16 pressure chambers
all 8 can be switched on and off separately



Create a unique and personalised experience with LYMPHA WAVE PRO.
Thanks to its 8 individually controlled sections—comprising 16 air chambers—you can easily switch zones on or off to adapt each session to your client's needs. Whether you're avoiding sensitive areas or focusing on specific zones for recovery, slimming or relaxation, this smart flexibility allows for safe, targeted and results-driven treatments every time

6 stands *for targeted treatments*

Mode 1 – Sequential (1 room at a time, foot to top)

✓ For basic lymphatic drainage, heavy legs and first sessions ✓ Gentle and natural – ideal for beginners and post-operative

Mode 2 – Double wave (2 rooms simultaneously, sequential)

✓ For mild edema, cellulite type 1–2 ✓ Slightly more intensive, faster effect, comfortable pressure gradient

Mode 3 – Progressive (1→2→3 rooms, step by step)

✓ For fibrosis, post-liposuction (from week 2), connective tissue ✓ Builds up pressure slowly – makes tissue supple

Mode 4 – Full body (all at once)

✓ For relaxation, muscle recovery and detox ✓ Ideal after massage or stress – deep rest

Mode 5 – Sequential + then full body

✓ For advanced drainage or final “boost” ✓ Drain first, then deep pressure for retention

Mode 6 – 2 chambers cyclic + then full body

✓ For cellulite type 2–3, feeling of heaviness, circulation ✓ Active rhythmic stimulation + total compression

9 pressure levels *Adjustable intensity from 72 to 220 mmHg*

1. 72 mmHg

Very sensitive clients, first session, postoperative from week 2, relaxation, lymphatic drainage for the elderly

2. 105 mmHg

Mild edema, sensitive skin, relaxation treatment, start detox

3. 142 mmHg

Cellulite type 1, mild fibrosis, general drainage with sedentary occupation

4. 166.5 mmHg

Active cellulite treatment type 1–2, slimming treatment, postpartum recovery (after 6 weeks)

5. 197 mmHg

Fibrosis after liposuction (after 3–4 weeks), more intense edema treatment, sports recovery

6. 202.5 mmHg

Deep lymphatic stimulation, advanced cellulite type 2–3, strong detox sessions

7. 210 mmHg

Advanced clients accustomed to pressotherapy, deep connective tissue support

8. 217.5 mmHg

Combination with heat for persistent fibrosis or accumulated tissue

9. 220 mmHg

For experienced users only, short duration, deep compression for very heavy builds

4 heat settings *Sauna effect via heating carbon wires*

1 – Soft deep warmth

Feels warm, yet gentle – no sweat reaction ✓ For relaxation, lymphatic drainage, stress relief ✓ Ideal for sensitive skin, first treatments, older clients ✓ Can be used for extended periods (30–45 min)

2 – Comfortably warm

Nice and warm without sweating ✓ Stimulates circulation, has a relaxing and detoxifying effect ✓ Ideal for detox treatments and for fluid retention ✓ Comfortable for most clients without overheating

3 – Active sweat response

Heat induces perspiration and deep detox ✓ For slimming treatments, cellulite, intensive detox ✓ Only use in good health & sufficient hydration ✓ Maximum 30–35 min recommended

4 – Short thermal boost

Very hot – only apply for up to 10 minutes for safety ✓ For experienced clients, boost for fibrosis ✓ Do not use on sensitive skin or postoperatively (in the first 3 weeks)

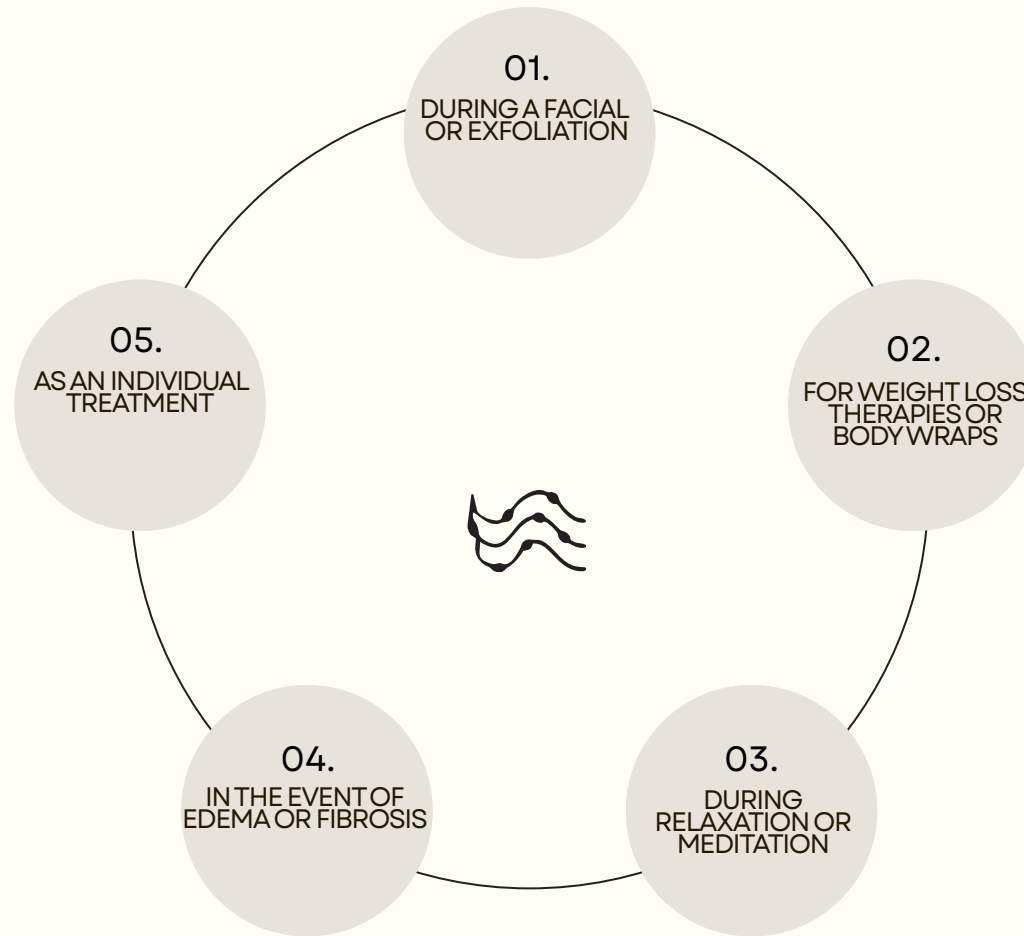
Luxury *looks and feels*

The LYMPHA WAVE PRO is made from flexible PVC reinforced with a honeycomb structure — combining elegance with engineered durability. This premium finish bends softly with the body while maintaining long-lasting strength, resistance to wear, pressure, heat and a refined, easy-to-clean surface.

The unique interior design was created by Fleur Vos, a designer trained in Graphic Design at the University of Lincoln, bringing together modern aesthetics and functional precision. The result: a treatment device that not only works beautifully, but looks and feels truly luxurious.



Optimize your proposal and revenue per client. *without extra workload*



Why invest in LYMPHA WAVE PRO ?

TRAINING WITH CERTIFICATE

Learn all about anatomy, operation of the device, indications and protocols (live or online) Certificate of participation included

24-MONTH WARRANTY

Includes free replacement for non-mechanical damage

FAST PAYBACK PERIOD

Treatment from €50-75 per session – device pays for itself after approximately 50 treatments

MULTIFUNCTIONAL & HANDS-FREE USE

Ideal for adding to existing treatments without additional manual work.
More turnover per hour

CE CERTIFICATION

Meets the highest European standards for safety and quality

SOCIAL MEDIA VISUALS + PROMOMATERIAL

You will receive a ready-made package with:

- Canva posts in your style (feed & stories)
- Before and after formats
- Flyer template (A5)
- Poster (optional)

Fast returns and stable cash flow *on your investment*

The LYMPHA WAVE PRO is much more than just a device. It's a profitable addition to your treatment offerings, generating direct revenue, adding value for your clients, and freeing up your schedule. Because the device works independently, it requires no additional hands and can easily be combined with existing treatments like facials, body wraps, or relaxation rituals. With a session price between €50 and €75, the device offers attractive margins and a fast payback period—often within 50 treatments. But perhaps even more importantly: thanks to treatment options, add-ons, and subscriptions, the LYMPHA WAVE PRO creates a stable and predictable cash flow, month after month.

10 TREATMENTS
5 ROUNDS OF €700

≈ 4 A YEAR SUBSCRIPTIONS
FROM €70/MONTH = €840/YEAR

FACIAL TREATMENT + LYMPHA
70 SESSIONS AT €50

47 SESJI INDYWIDUALNYCH PO 75 €



ONE-TIME INVESTMENT: €3,500 EXCL. VAT



Ready to experience **LYMPHA WAVE PRO?**

Schedule a quick demo session and
discover the device in action

- ✓ Telephone: +31 638350878
- ✓ email: contact@lymphawavepro.com
- ✓ www.lymphawavepro.com